

Green City, Clean Waters

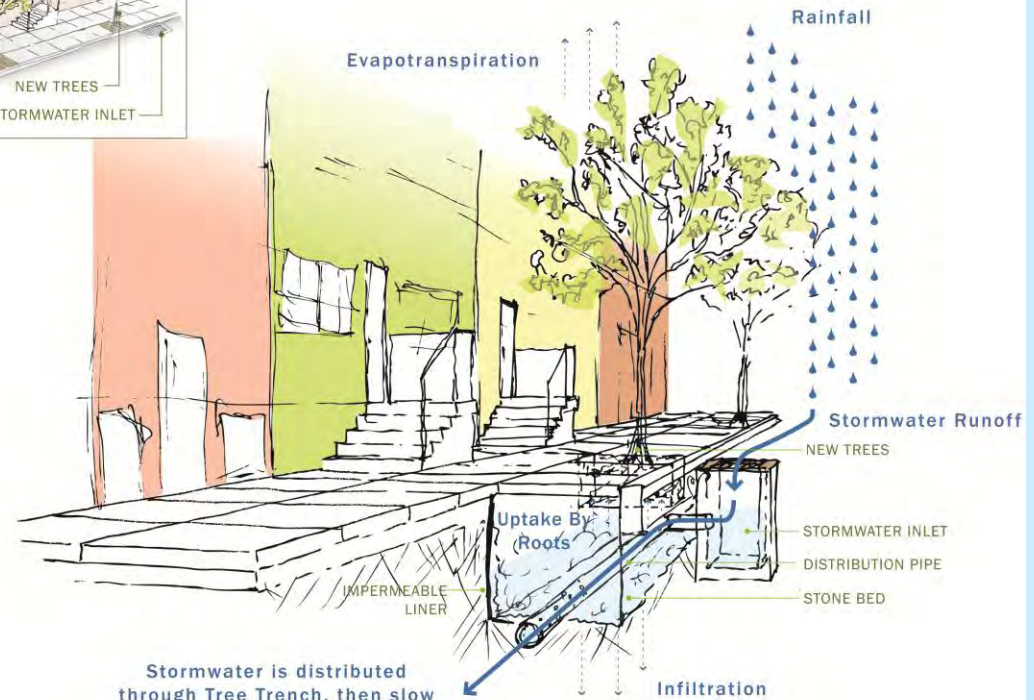
Identifying Potential Green Stormwater
Infrastructure Projects in Your Neighborhood



Stormwater Tree Trench



Street View



Stormwater is distributed through Tree Trench, then slow released into existing storm sewer, if necessary

A **Stormwater Tree Trench** is a system of street tree plantings connected by an underground storage system. Runoff flows through a special storm drain into the tree trench where it is stored, infiltrated, and taken up by the tree's roots.

How Does PWD Identify Projects?

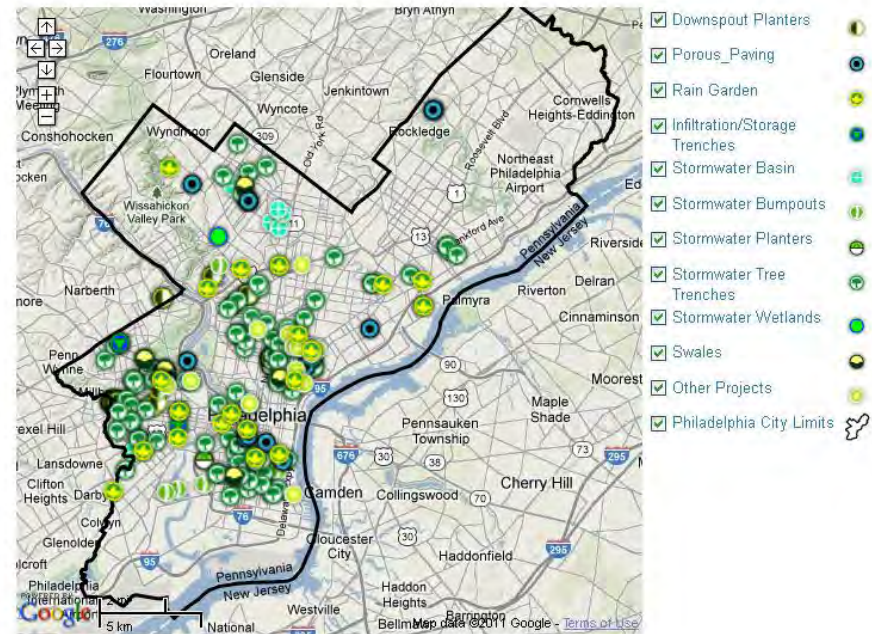
PWD considers the following as part of the site selection process

- Partnership opportunities
- Combined sewer area
- Capacity to manage a significant amount of stormwater runoff including public runoff (at least 8,000 sf)
- Project site must be attached to at least 1 stormwater inlet
- Technical feasibility

Green Stormwater Infrastructure Project Map

The Philadelphia Water Department has completed or is in the process of designing:

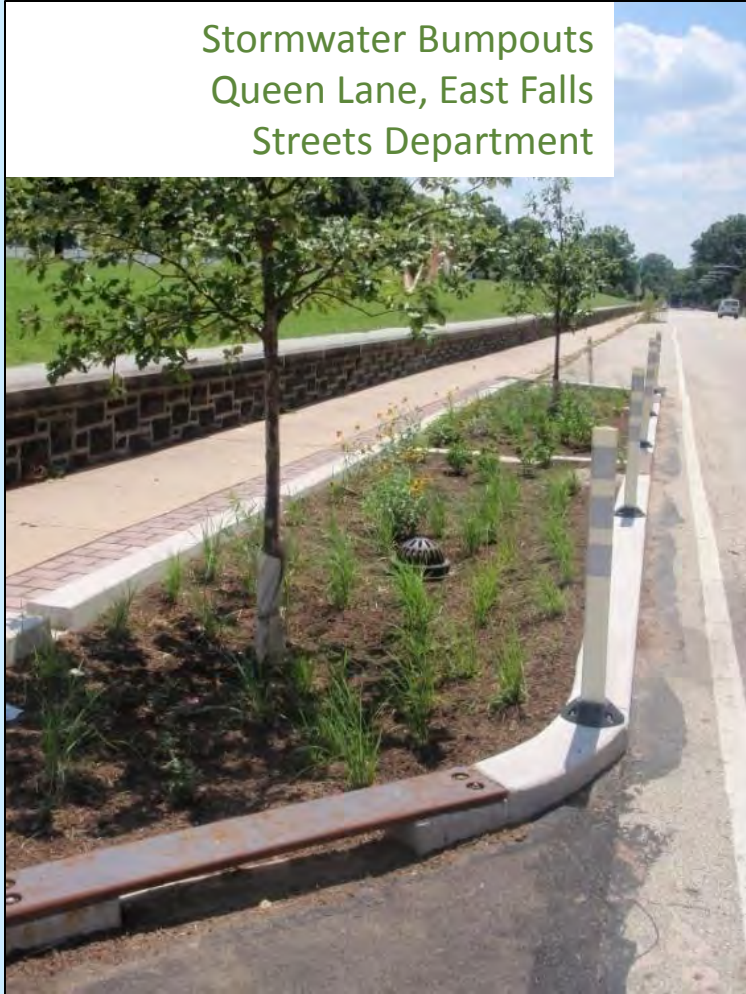
- 99 Stormwater tree trenches
- 20 Rain gardens
- 15 Porous paving projects
- 9 Swales
- 15 Stormwater planters
- 33 Downspout planters
- 11 Stormwater bumpouts
- 14 Infiltration/storage trenches
- 2 Stormwater wetlands
- 6 Stormwater basins
- 1 Green roofs
- 15 Other projects



Phillywatersheds.org/biggreenmap

Examples of Partnership Sites

Stormwater Bumpouts
Queen Lane, East Falls
Streets Department



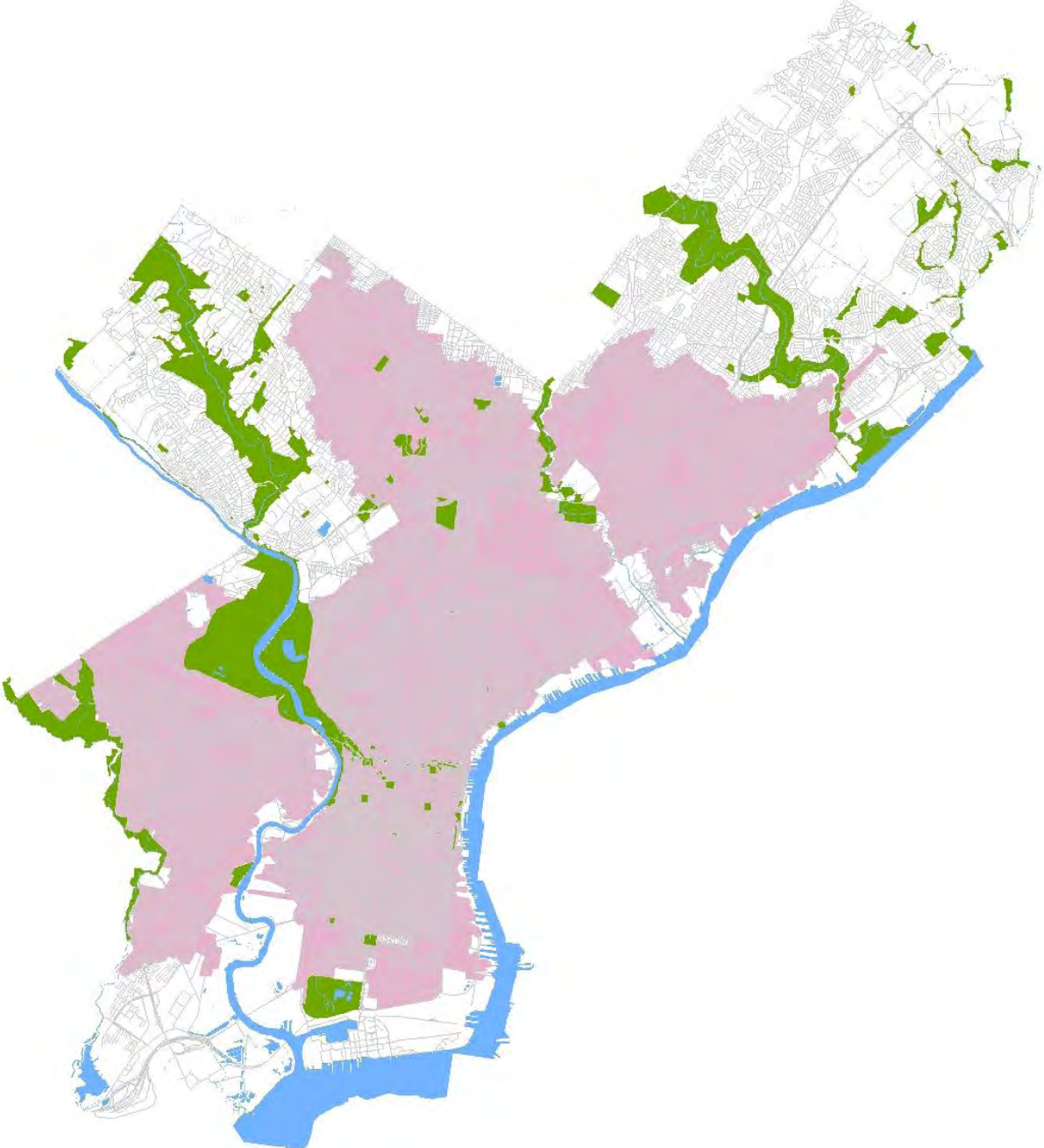
Stormwater Treatment Wetland
Saylors Grove, Wissahickon
Parks & Recreation



Rain Garden
Penn Alexander School, West Philadelphia
Philadelphia School District

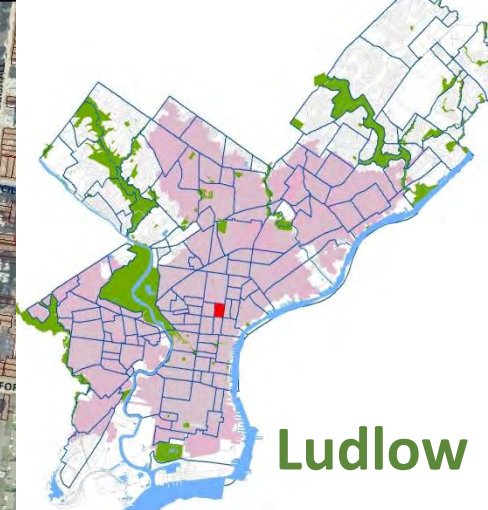
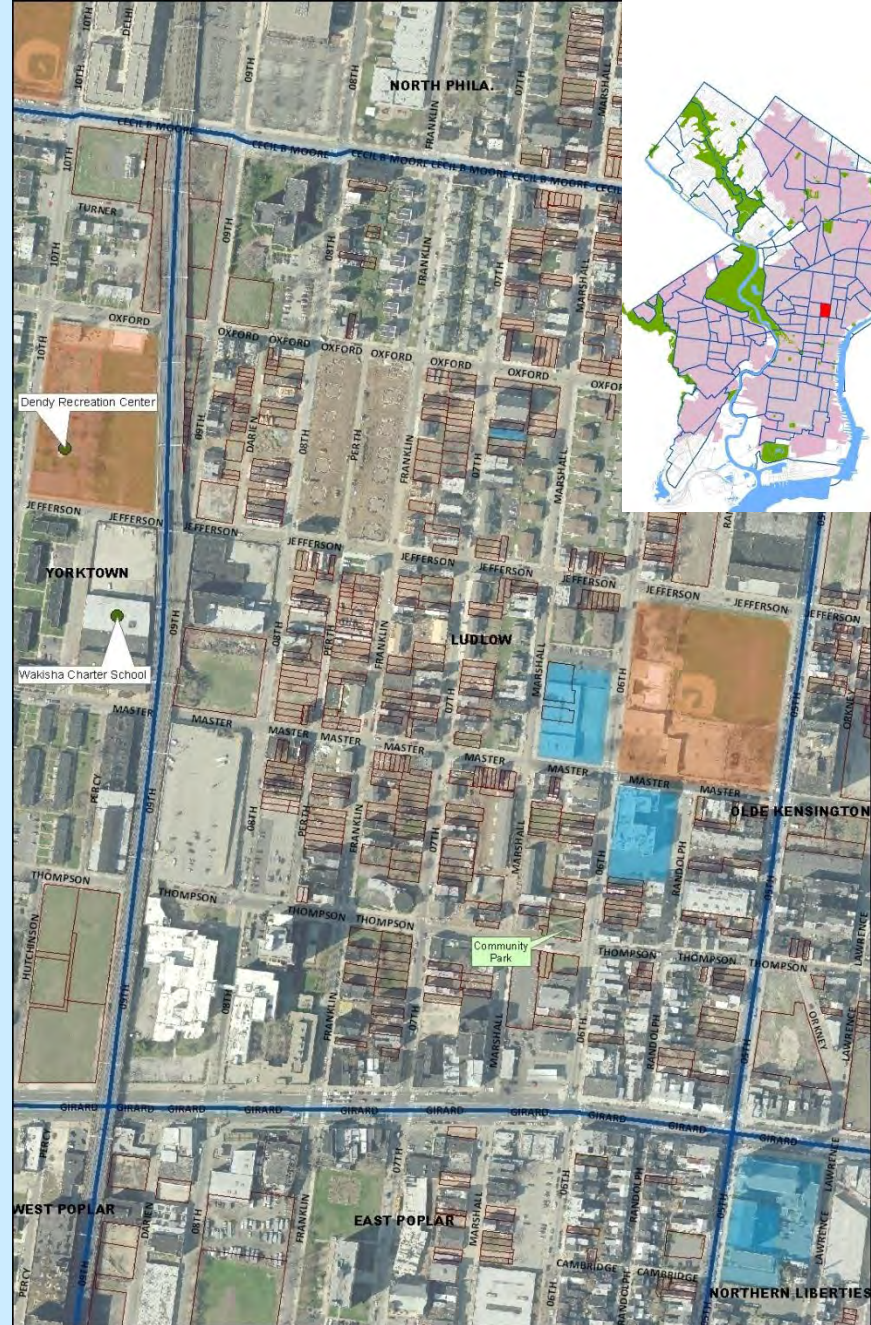


Combined Sewer
Area (pink)



Neighborhood Map

- Planned GSI Projects (green dots)
 - Dendy Recreation Center
 - Wakisha Charter School
- Rec Centers (orange)
- Schools (blue)
- Vacant lots (brown outlines)
- Parks



Ludlow

Green Street Technical Feasibility

Good: Wide sidewalks



Good: Buildings set back from street



Problematic: Tree lined streets



Problematic: Dense development



Site Analysis



Drainage Area & Inlets



Community Input Form

The screenshot shows a web browser window with the URL www.phillywatersheds.org/whats_in_it_for_you/CI_Index. The page header features the Philadelphia Water Department logo and navigation links for Search, Home, Glossary, and Contact. Below the header is a large banner image of a city street with a river and buildings. A navigation bar below the banner has four tabs: "YOUR WATERSHED", "WATERSHED ISSUES", "WHAT WE'RE DOING" (which is highlighted), and "WHAT'S IN IT FOR YOU".

On the left side, there is a vertical menu with the following items: Events, Residents, Businesses, Schools, and Community.

Community Input for Green Stormwater Infrastructure

The Philadelphia Water Department (PWD) seeks to partner with community stakeholders across the city to develop green stormwater management projects as part of our [Green City, Clean Waters](#) program.

[Green Stormwater Infrastructure](#) (GSI) refers to a range of tools such as rain gardens, stormwater tree trenches, stormwater planters and pervious pavement that capture and filter stormwater and allow it to slowly infiltrate into the soil, reducing the amount of runoff and sewer overflows that pollute our waterways.

PWD is accepting community input on potential green stormwater infrastructure projects at schools, recreation centers, parks, public spaces and parking lots. PWD will also review neighborhood planning initiatives that have identified stormwater management opportunities.

Please read through the resources below to learn about the community input process and submit a project suggestion. Submission of input does not guarantee that a project will be selected for implementation.

Thank you for your interest!

- 1. Criteria**
Learn about the types of projects that are eligible. [let me view](#)
- 2. Stormwater Analysis**
Conduct a stormwater analysis to identify opportunities for stormwater management on a particular site or within a community. [let me view](#)
- 3. Gathering Information**
Read through these steps to identify the types of information necessary for a project submission. [let me view](#)
- 4. Community Input Form**
If you have a project that meets the criteria outlined above, follow this link to submit a detailed community input form. [let me view](#)

www.phillywatersheds.org/cif

Project Criteria

Community Input For Green Stormwater Infrastructure

Step 1 of 5: Project Criteria

Project Requirements

- Projects must focus on the development of green infrastructure for stormwater management purposes.
- Only projects at schools, parks, recreation centers, parking lots, public spaces (vacant lots, community gardens and parks, traffic triangles, vacated streets and others) and public corridors will be considered.
- Only projects on land owned by the City of Philadelphia or the Philadelphia School District (with the exception of vacant lots and community gardens) will be considered.
- Projects outside of the City of Philadelphia will not be considered.

Project Selection Priorities

- Submitters are encouraged, but not required, to be affiliated with a community organization, civic group, non-profit, school, recreation center, business district, elected official's office or other organization or institution.
- Projects that have developed community or institutional partnerships and/or have undergone a community-based planning process are prioritized by PWD.
- All projects must, if selected, conduct community outreach and engagement.

Additional Resources

- Projects on private, non-residential sites can apply for grants and low-interest loans for green infrastructure projects through the [Stormwater Management Incentives Program](#).
- Projects on private, non-residential sites can reduce their stormwater fees by developing green infrastructure projects through [PWD Stormwater Credit Assistance](#).
- Developers can use the [Developer's Guide to Stormwater Management](#) to develop their own stormwater management plans.
- Homeowners can utilize our [Residential Page](#) for information on developing green infrastructure projects at home.

Project Type: Parks, Recreation Centers & Schools

Parks & Recreation Centers

- Must contain impervious surface
- Must have space for green infrastructure
- Must have support from community and park / rec center users

Schools

- Must have buy-in from principal and parent/teacher associations
- It is beneficial if there are teachers at the school who are interested in incorporating green infrastructure into their science curriculum



Waterview Recreation Center



Kensington CAPA High School

Project Type: Parking lots, Traffic Circles & Triangles

Parking Lots

- Must be owned by a City of Philadelphia agency
- Must have space for green infrastructure

Traffic Circle or Triangle

- Must have excess paved space within the street right-of-way that could be used for green stormwater management without disrupting the flow of traffic



Eadom Street City-Owned Parking Lot



Traffic Triangle @ 47th St. & Grays Ferry Ave.

Project Type: Vacant Lots

- Must not contain structures or be in use
- Can be publicly or privately owned
- Vacant lots under 2,000 sf are preferred
- Larger lots that have been prioritized by the community for greening can also be submitted
- Small or oddly-shaped lots, unsuitable for new development are of highest interest to PWD

Note: PWD is in the process of developing a vacant lot program. At this point vacant lots must be available for acquisition through sheriffs auction, for example, and are on a longer planning timeline



Vacant Lot Project Site at 42nd, Brown and Lancaster

Project Type: Other Public Spaces

Community Garden or Park

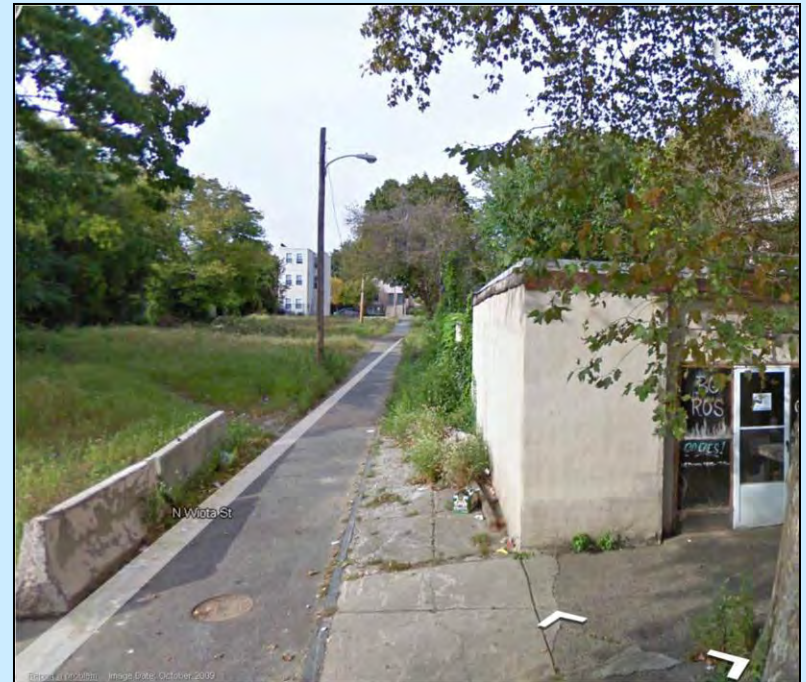
- A community-run garden or park established on a city-owned lot.
- Must have space for green stormwater infrastructure & community support

Public Plaza

- A City-owned outdoor space that does not fit into the category of park or recreation center

Vacated Street

- Land that was either planned or formerly used as a street that is no longer used as a public street



Wiota Street, Lower Lancaster Neighborhood

Complete Online Form

Important: Submission of a potential site **DOES NOT** mean the project will be selected. Projects that are preliminarily approved will be put into the project queue and will be selected for implementation as feasible. Selected projects generally take **2-5 years** to go from identification to implementation.



Philadelphia Water Department Search Home Glossary Contact Log In Log Out

YOUR WATERSHED **WATERSHED ISSUES** **WHAT WE'RE DOING** **WHAT'S IN IT FOR YOU**

Events
Residents
Businesses
Schools
Community

Community Input For Green Stormwater Infrastructure

This form **cannot be saved**. Please read through the entire form and make sure that you have gathered all relevant information before beginning.

All items marked with a (*) are required.

School Project

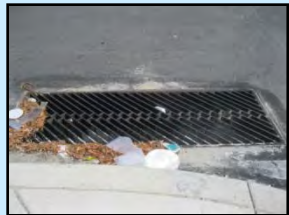
Contact Person: *

Contact Phone Number: *

Contact Email: *

Contact Person's Position or Affiliation with School: *

Adopt Your Green Stormwater Project



Green Stormwater Project Adoption Activity Chart Roles & Responsibilities

Green Stormwater Project Care and Maintenance Activity	PWD	Ambassador / Steward
Remove trash and debris	✓	✓
Monitor plant health and water during extended periods of dry weather	✓	✓
Check for Erosion	✓	✓
Maintain and Repair site infrastructure (i.e., inside the stormwater planter)	✓	X
Add soil, fertilizer, or other growing medium	✓	X
Install or remove vegetation	✓	X
Look for structural damage to the facility	✓	✓
Repair structural damage to the facility	✓	X
Monitor standing water following major rain events for ponding water standing for more than 72 hours	✓	✓