

Temple – Villanova

Sustainable Stormwater Initiative

Temple - Villanova Sustainable Stormwater Initiative



Partners



Center for Sustainable Communities
TEMPLE UNIVERSITY

Overview Stormwater Research Outreach Program Regional BMP Database



Mission Statement

To advance the practice of stormwater management through cross-disciplinary research, demonstration, and outreach.

Highlights!

Financing Opportunities for Green Infrastructure

Conference at Temple University Ambler 2010

BMP Recognition Program Awards

PDF file of award-winning projects announced at the 2009 Villanova Stormwater Symposium

Video Feature Constructed Wetland

at Pennypack Ecological Restoration Trust

About T-VSSI

Just as the two important tributary watersheds, the Pennypack Creek and Schuylkill River watersheds, contribute to the larger, more complex Delaware River system, Temple University's **Center for Sustainable Communities** (CSC) and **Villanova Urban Stormwater Partnership** (VUSP) combined resources to form a larger, more powerful stormwater initiative: the Temple-Villanova Sustainable Stormwater Initiative (T-VSSI). The T-VSSI is envisioned as a long-term partnership that combines the strengths of both research centers creating an interdisciplinary organization to demonstrate stormwater Best Management Practices (BMPs), to conduct research, and to conduct a broad outreach program focusing on regional stormwater management. As two independent research programs, the CSC and the VUSP have made important contributions to the understanding of the stormwater management issues and implementation of BMPs in their respective watersheds.

The T-VSSI project has been made possible by research grants from **William Penn Foundation** and **PADEP Growing Greener**



<http://www.temple.edu/ambler/csc/t-vssi/>

Regional BMP Project Database

Temple - Villanova Sustainable Stormwater Initiative





Partners




Center for Sustainable Communities
TEMPLE UNIVERSITY

Overview | Stormwater Research | Outreach Program | **Regional BMP Database**

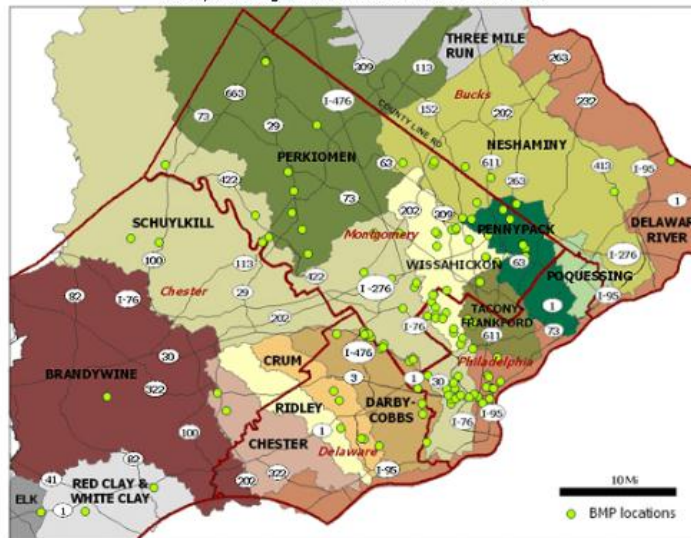
About the Database | BMP Projects

Regional BMP Projects

See all BMP Projects

BMP by Watershed

Select a watershed by clicking its location on the map or by clicking on its name in the list below.



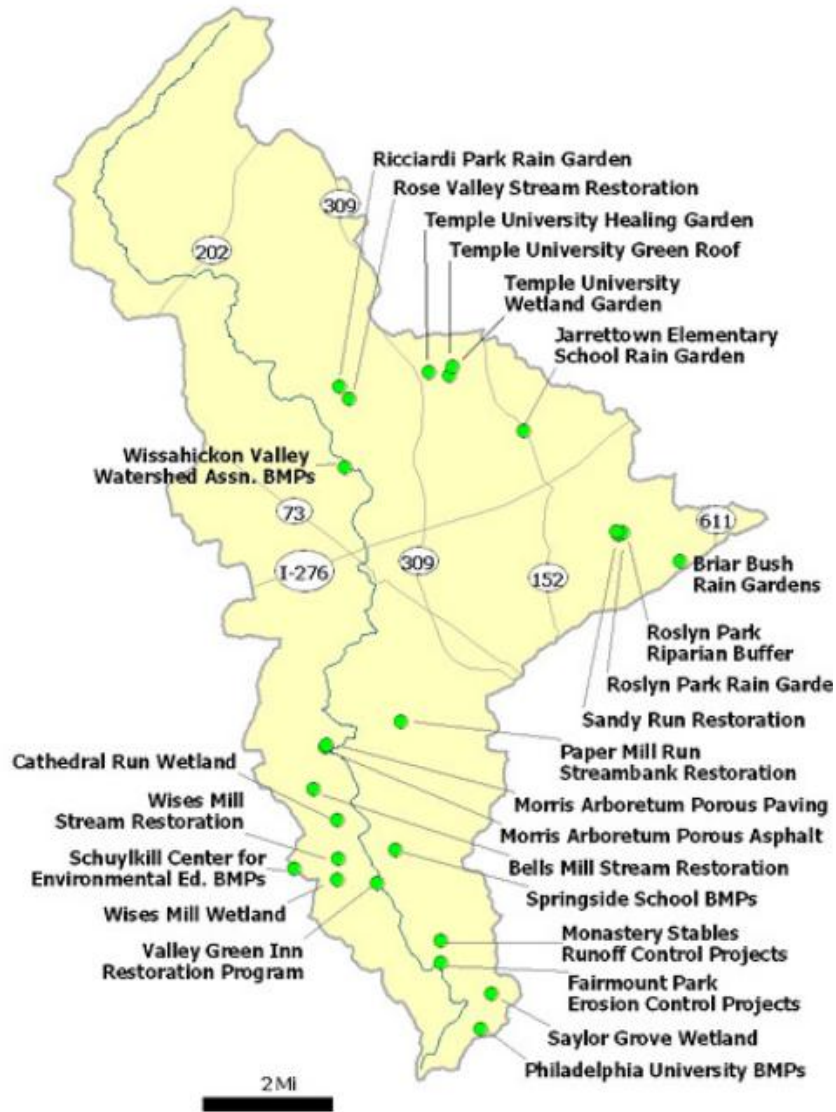
Brandywine Creek	Chester Creek	Crum Creek	Darby-Cobbs Creek
Delaware River	Elk Creek	Neshaminy Creek	Pennypack Creek
Perkiomen Creek	Red & White Clay Creek	Ridley Creek	Schuylkill River
Tacony-Frankford Creek	Wissahickon Creek		

GIS Data Sources for Maps: CSC, DVRPC, ESRI, PASDA, PWD.

BMP Award Recipients 2009 | 2007 | 2006

BMP by Type

- Aquatic Bench (?)
- Bioretention/Rain Gardens (?)
- Capture and Reuse System (?)
- Catch Basin Trap
- Dry Well/Seepage Pit (?)
- Education Program
- Erosion Control
- French Drain (?)
- Gabion Walls (?)
- Green Roof (?)
- Infiltration Trenching (?)
- Level Spreader (?)
- Naturalized/Vegetated Swales (?)
- No-mow Zone (?)
- Non-structural Practices (?)
- Porous Paving (?)
- Rain Barrels/Cisterns (?)
- Reduce Impervious Surface/ Retain Open Space (?)
- Restore Natural Areas (?)
- Riparian Buffer (?)
- Rooftop Disconnect (?)
- Sediment Trap/Forebay (?)
- Street Sweeping (?)
- Subsurface Infiltration (?)
- Tree Trench (?)
- Vortex Separator (?)
- Weir (?)
- Wet Pond (?)
- Wetland (?)



BMP Projects

- By Watershed
- By Type
- By Project

Regional BMP Project Profiles



Temple University-Ambler Green Roof
Wissahickon Creek Watershed



Temple University-Ambler Healing Garden
Wissahickon Creek Watershed



Temple University-Ambler Wetland Garden
Wissahickon Creek Watershed



Aqua America Bioretention Area
Schuykill River Watershed



Avon Grove Charter School Stormwater Management Techniques
Red-White Creeks Watershed



Awbury Arboretum Watershed Restoration Project
Tacony-Frankford Creek Watershed



Bells Mill Stream Restoration
Wissahickon Creek Watershed



Black Rock Park Naturalized Basin
Schuykill River Watershed



Blair Mill Elementary School Watershed Day BMP Installation
Pennypack Creek Watershed

Regional Project Profile
Rose Valley Creek Stream Restoration

Category: Implemented Retention Design
Type of BMP: riparian buffer, meadow restoration, rain garden



[Description](#) | [Location](#) | [Partners](#) | [Cost](#) | [Contact](#)

Description
In October 2009, the Friends of Borough Park in Ardler began an effort to restore 2.5 acres of the park located by Rose Valley Creek. The riparian buffer that had been established had become overgrown with invasive species, including multiflora rose, burdock, Norway maple, Japanese knotweed, and other invasive species. The first phase of the project focused on invasive plant removal. Grant funds from the Trowbridge program will be used to purchase native species that will be planted in the buffer, expanding the buffer's width from 10 to 50 feet. In addition to reducing flooding downstream and reducing the amount of nonpoint source pollution entering the stream, the buffer also provides streamside habitat for small wildlife.

Other restoration projects to be installed at Borough Park are a rain garden and a meadow. These will replace existing turfgrass, which provides less filtration of runoff. The meadow will be planted with native grasses, and will be mowed to create walking paths. The project also features a public education component focused on increasing stewardship of the stream as a valuable natural resource.

This project is expected to be completed by October 2010.



Existing buffer along Rose Valley Creek
Photo Credit: G. Foley



Establishing a buffer will help prevent streambank erosion
Photo Credit: G. Foley



Aerial map of park (click to enlarge)
Photo Credit: Philadelphia Water Department

Location
County: Montgomery
Watershed: Westchester Creek



View all 17000 GPSs in a larger map

Partners
Ardler Borough Environmental Advisory Committee
Friends of Ardler Borough Park
RAM Planning & Design, LLC

Cost
Total cost: \$75,000
Project was funded with grants from the Trowbridge program.

Contact
Susan Curry
Ardler Environmental Advisory Committee
122 East Butler Avenue
Ardler, PA 19002
215-992-1554

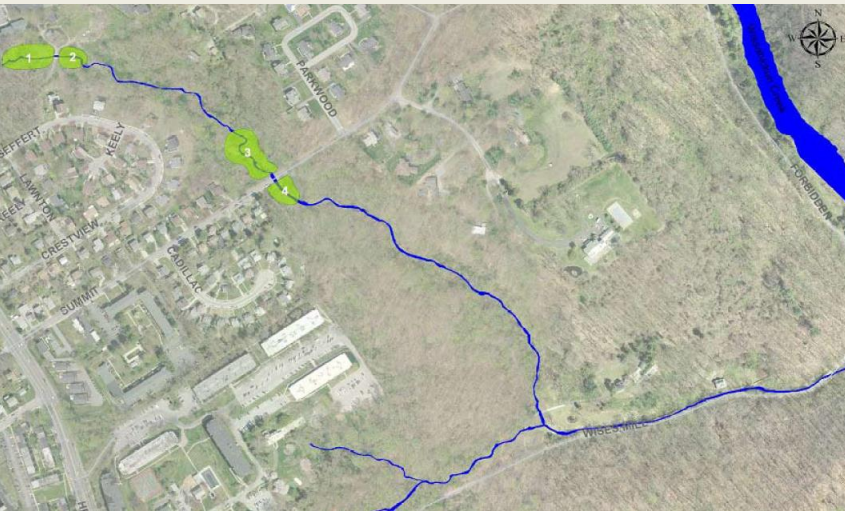
Project Information

- Project Description
- Location Map
- Images / Plans
- Construction Cost
- Contact Information



Villanova University
Green Roof

Philadelphia University
Rain Garden



Wise Mill
Stream Restoration