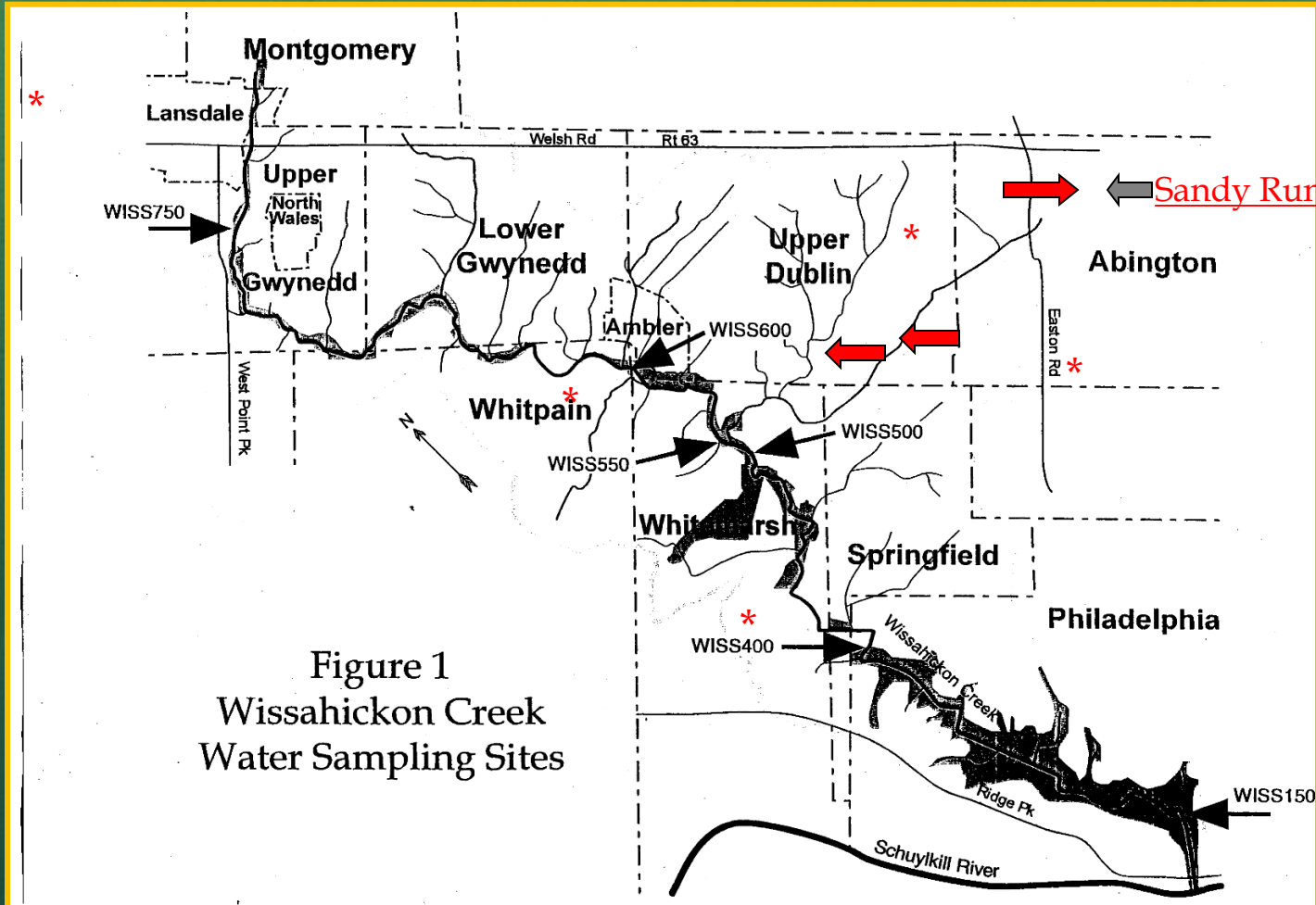


Water Quality of Wissahickon Creek 2010

- Trends over 2010
- Summary of Water Quality (2003-2010)
- Current Projects
- Upcoming Projects

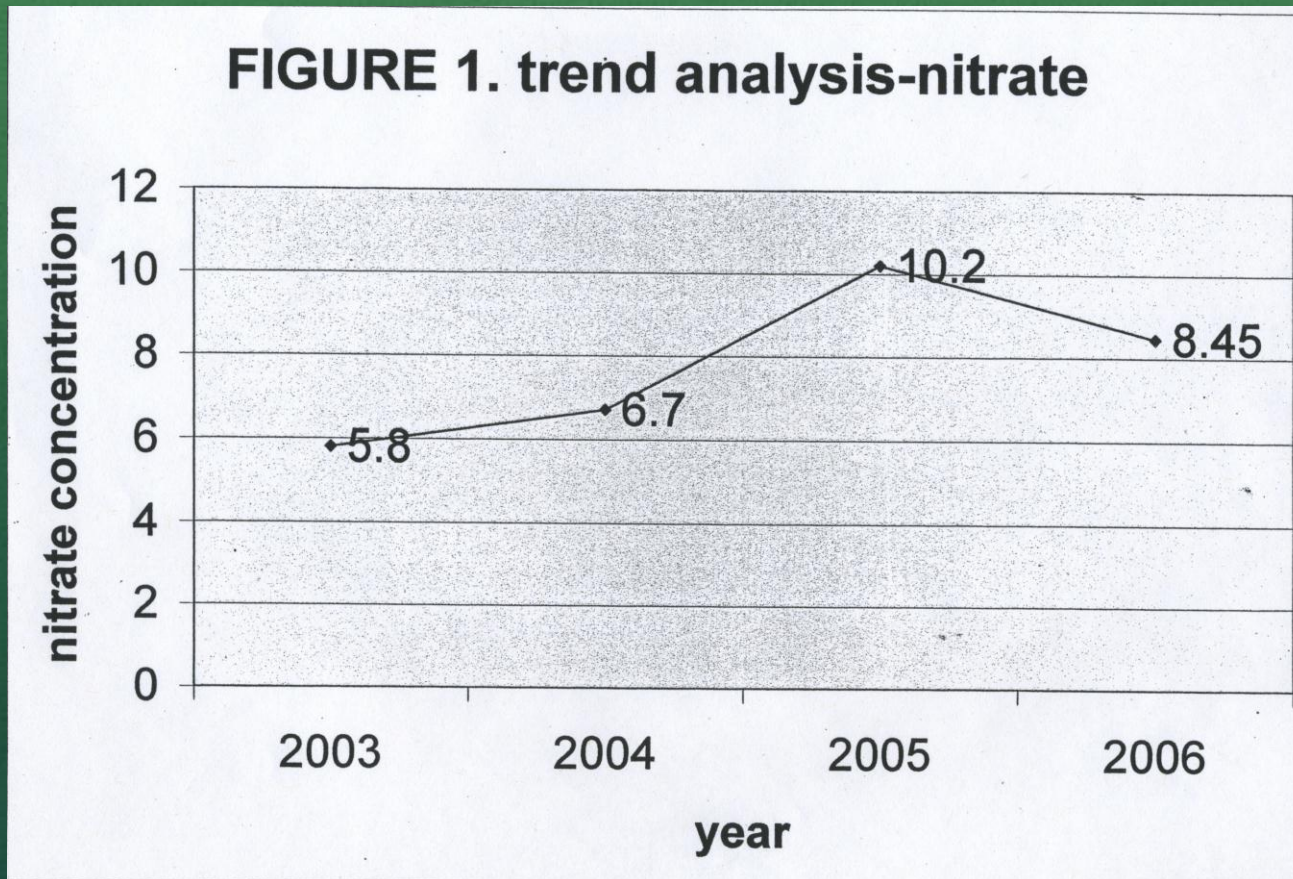
Sampling Site Locations along the Wissahickon Creek



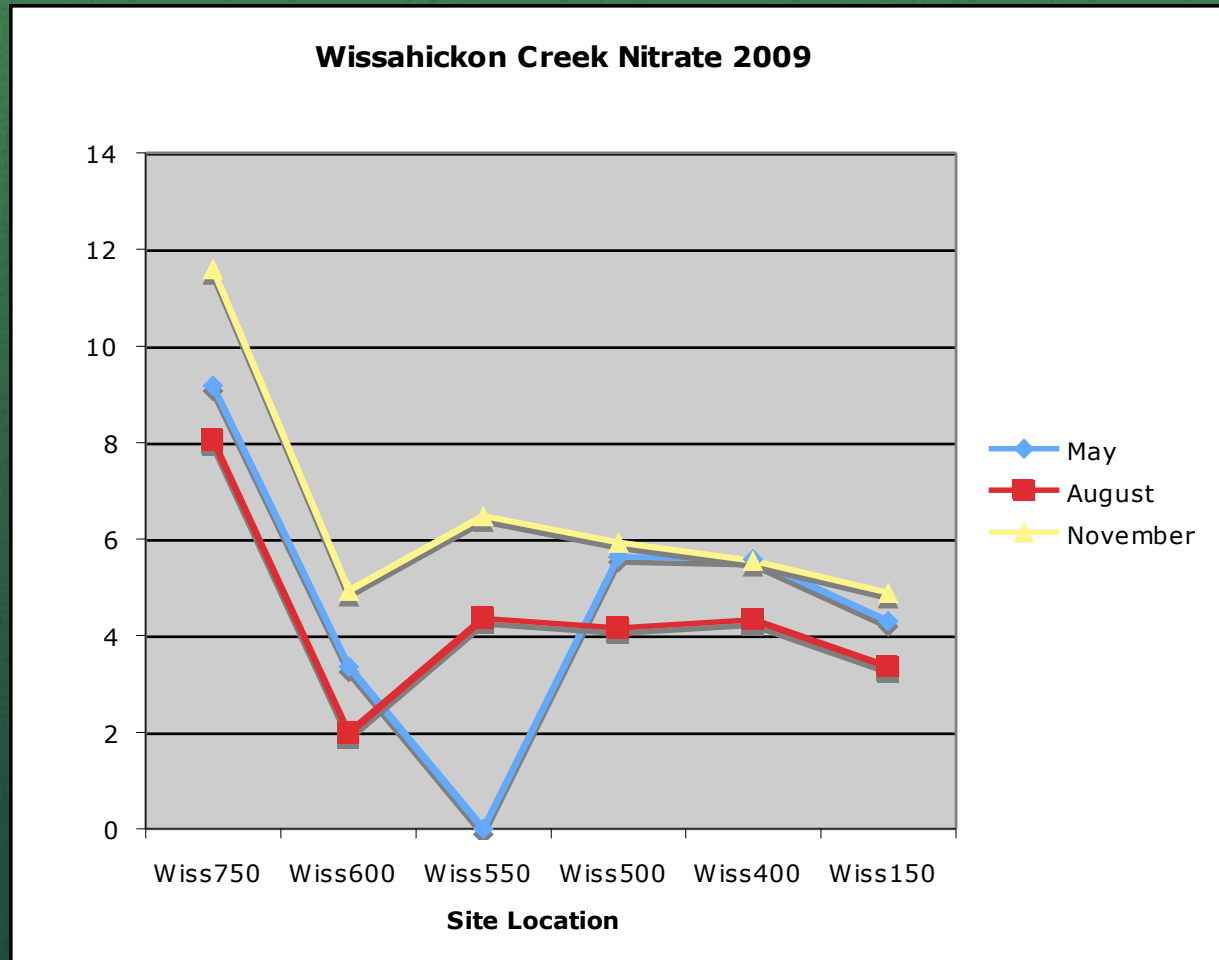
Primary Pollutant Concerns:

- Nutrients: Nitrate, Phosphate, Sulfate, Chloride
- Dissolved Oxygen (D.O.)
- Bacteria and Sedimentation
- Total Dissolved Solids (TDS)

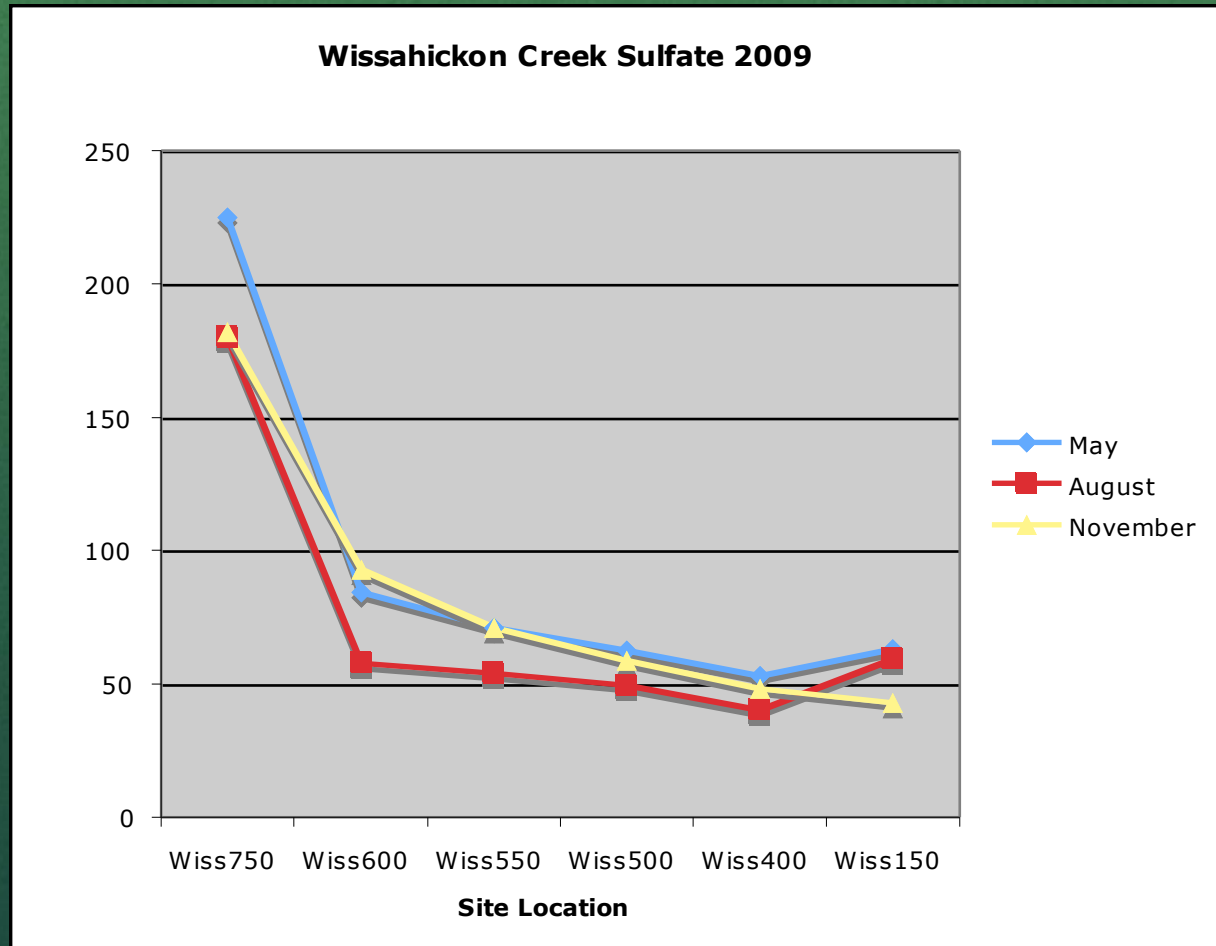
Nitrate Trend Analysis 2003-2006



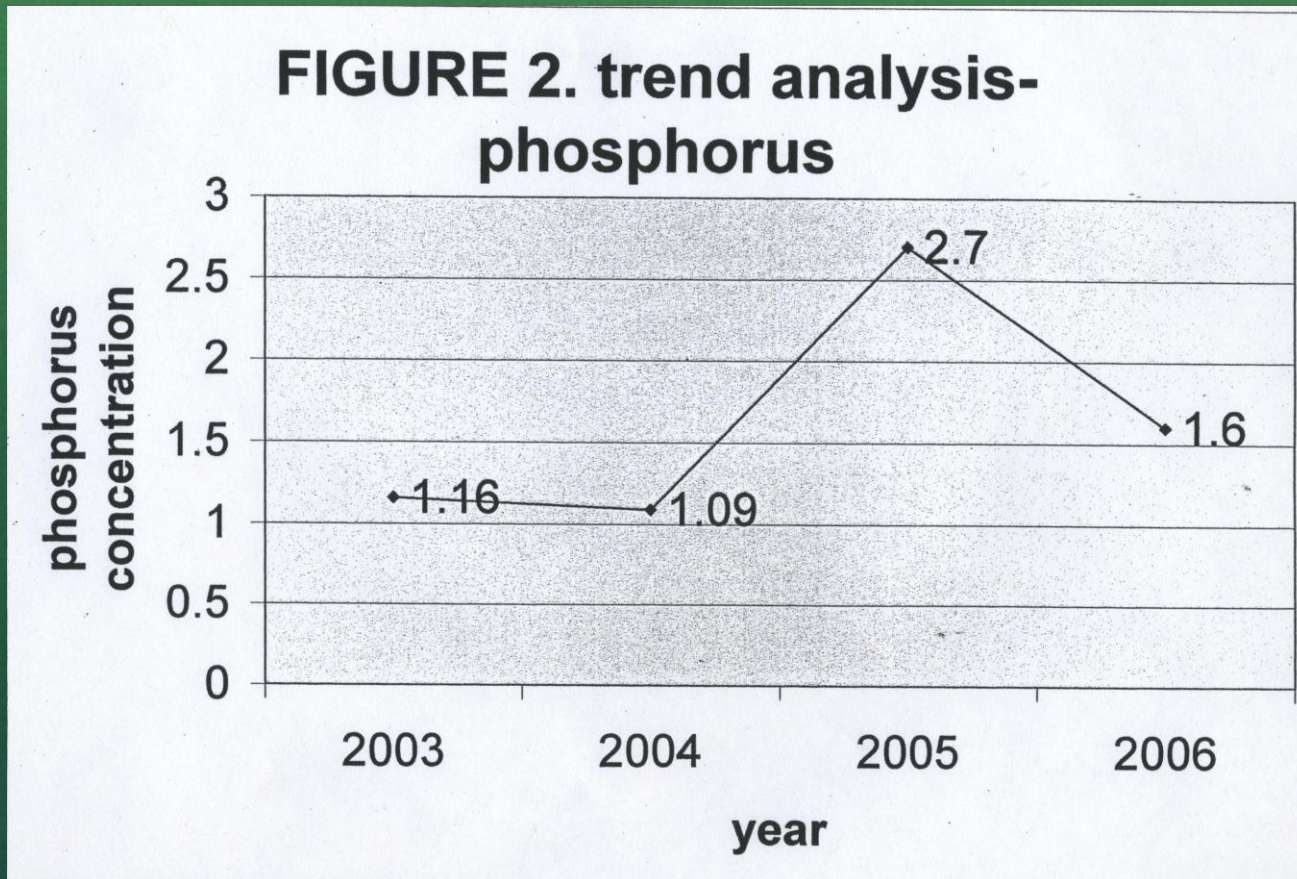
Nitrate Trend 2009



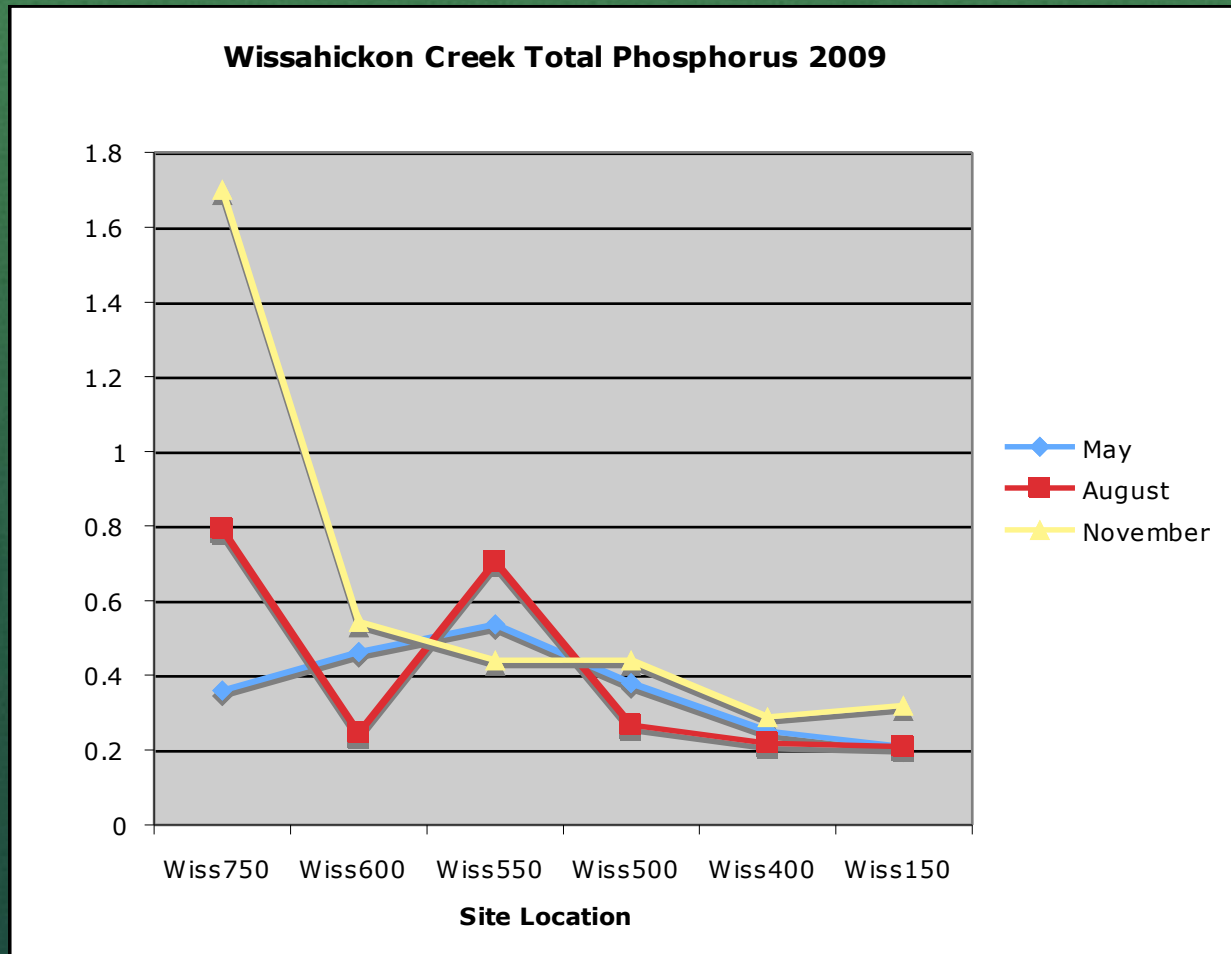
Sulfate Trend 2009



Phosphorus Trend Analysis 2003-2006

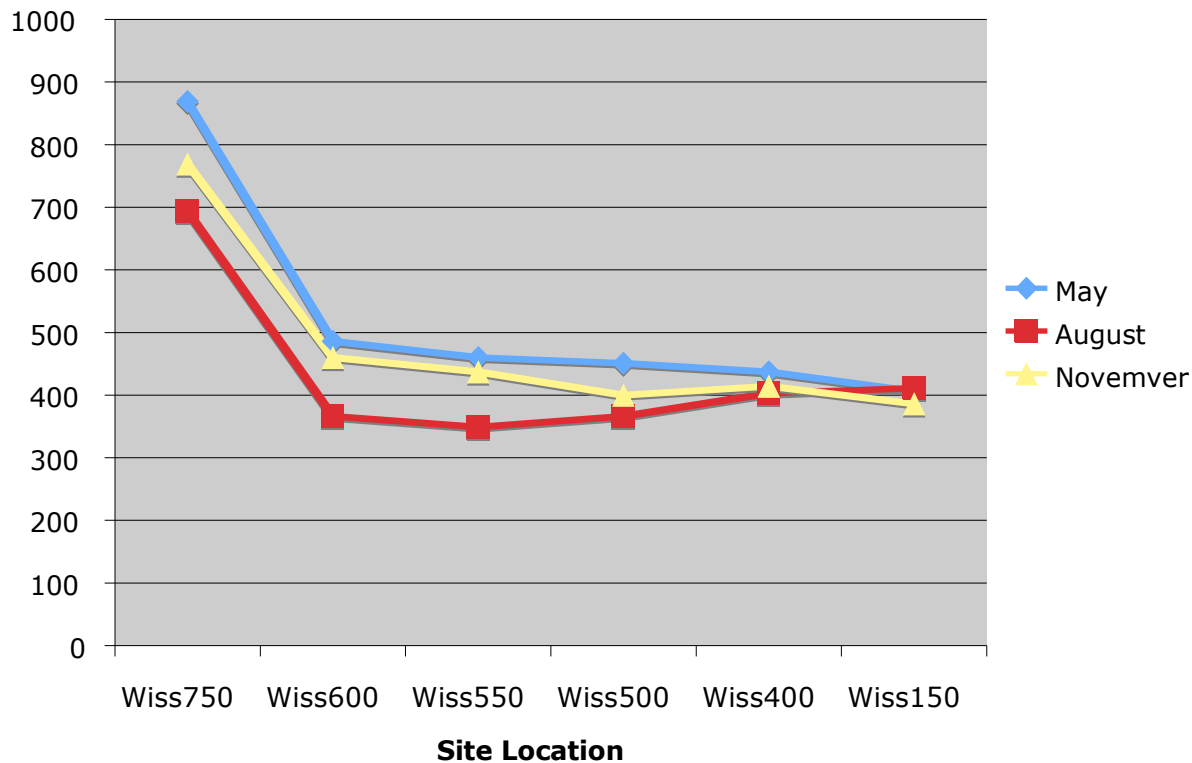


Total Phosphorus Trend 2009

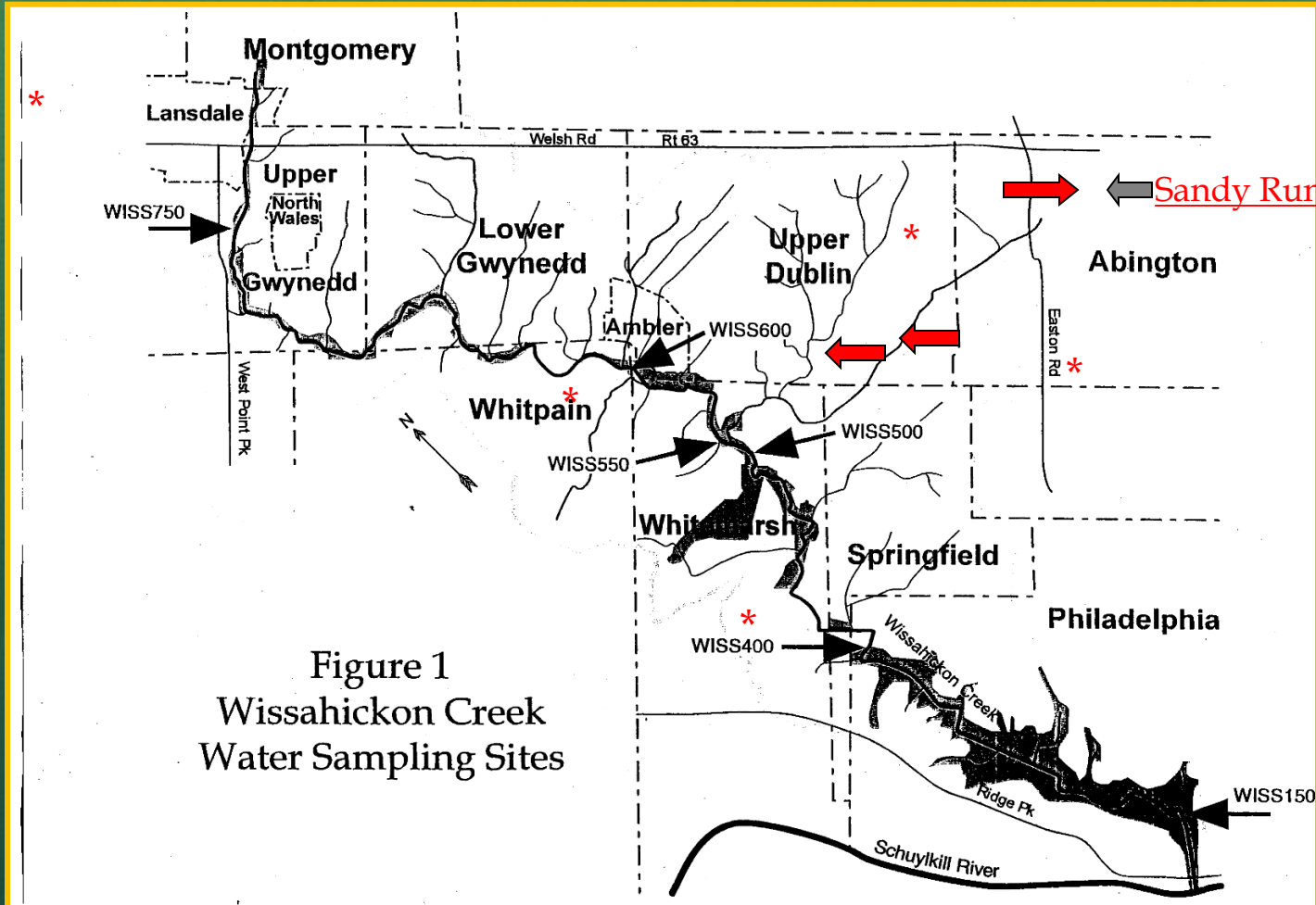


Total Dissolved Solids Trend 2009

Wissahickon Creek Total Dissolved Solids 2009

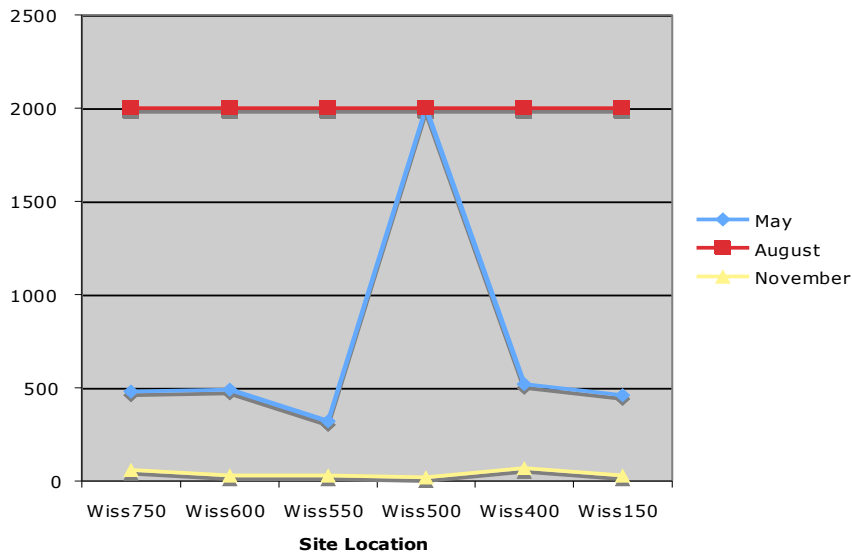


Sampling Site Locations along the Wissahickon Creek

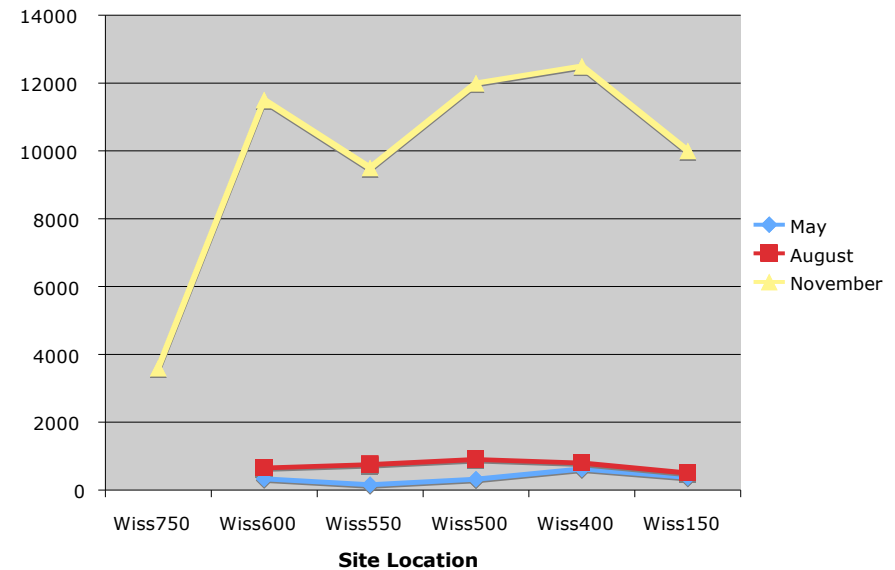


Total Coliform Trend 2009 and 2006

Wissahickon Creek Total Coliform 2009



Wissahickon Creek Total Coliform 2006



Water Quality Summary:

- Fort Washington site area has a source of pollution -- downstream from there, water quality improves
- Headwaters (Wiss750) has variable streamflow due to lack of baseflow or groundwater
- Summer has lowest water quality during the year
- D.O. fluctuates with temperature and sun exposure (daytime vs. night time)
- Bacteria are relatively high during summer and after storm events



12 Morris Rd.
Ambler, PA 19002
215-646-8866
www.wvwa.org