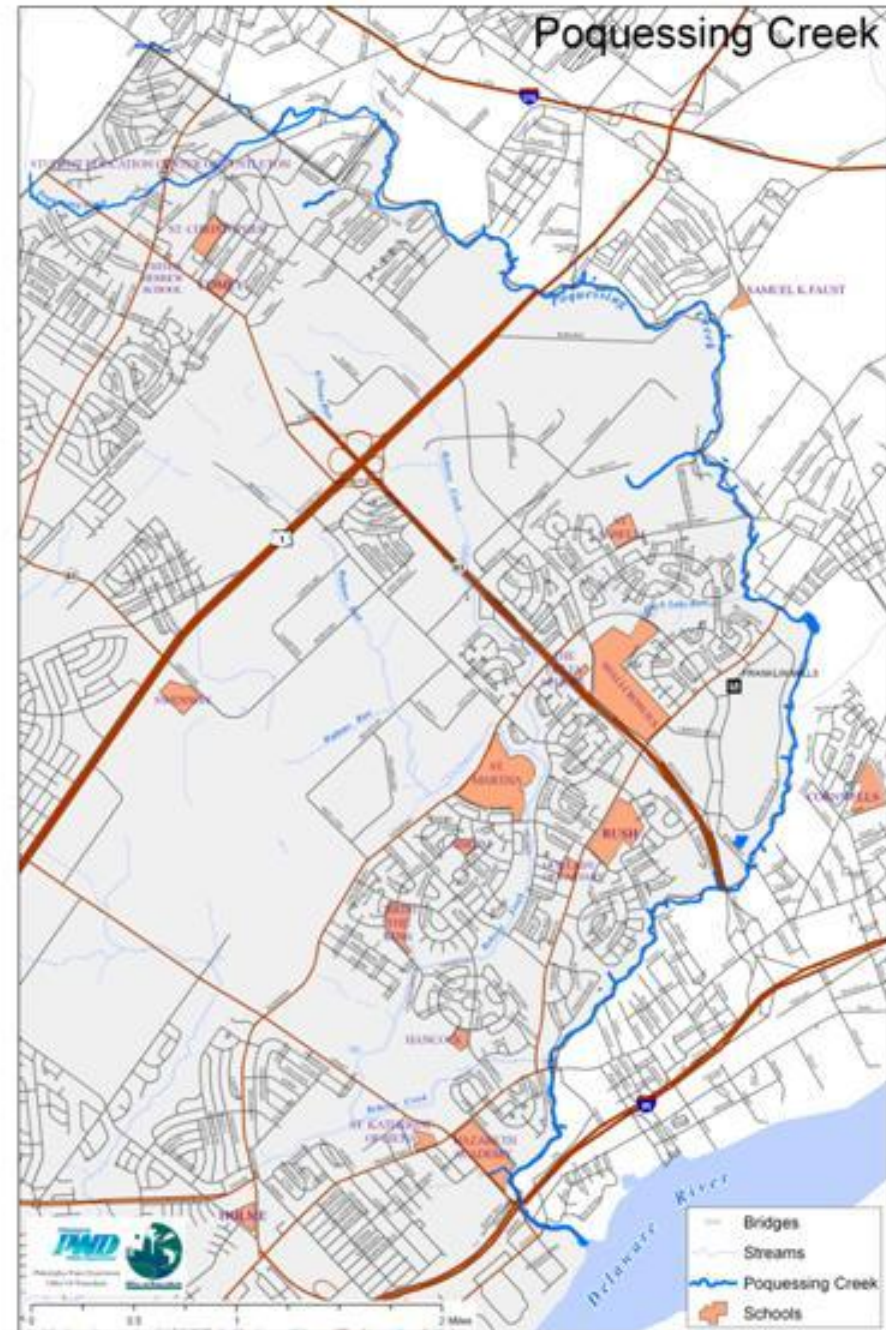


Protecting Poquessing Creek



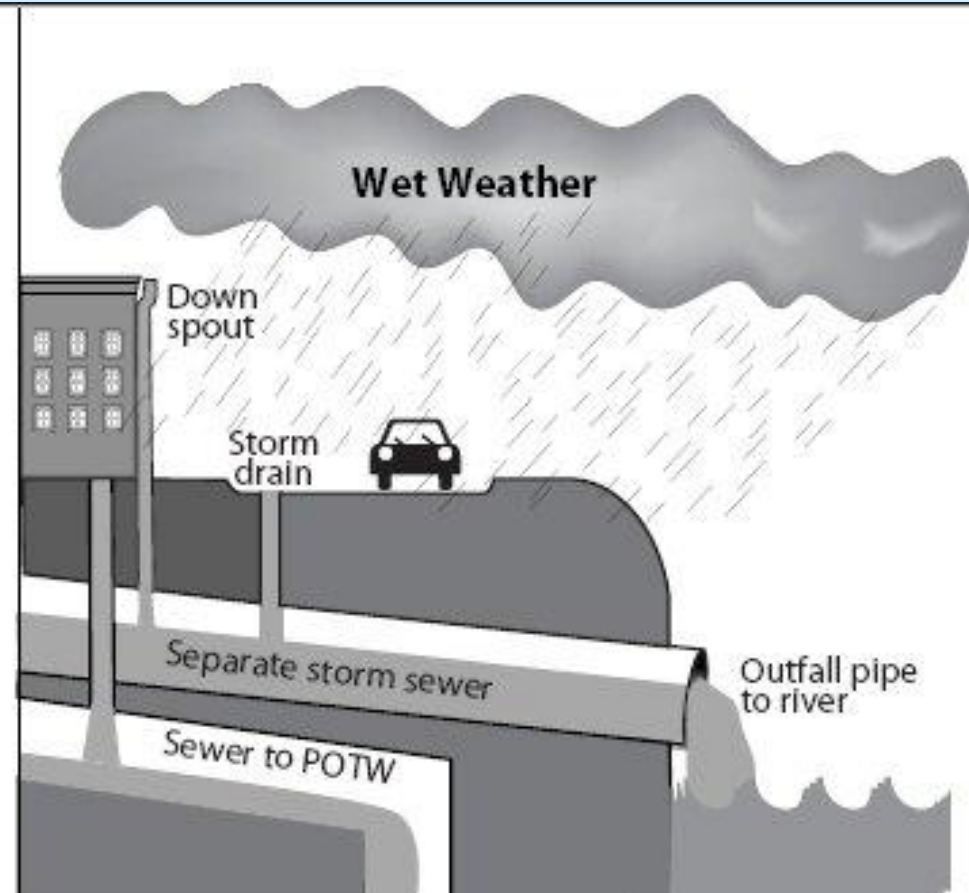
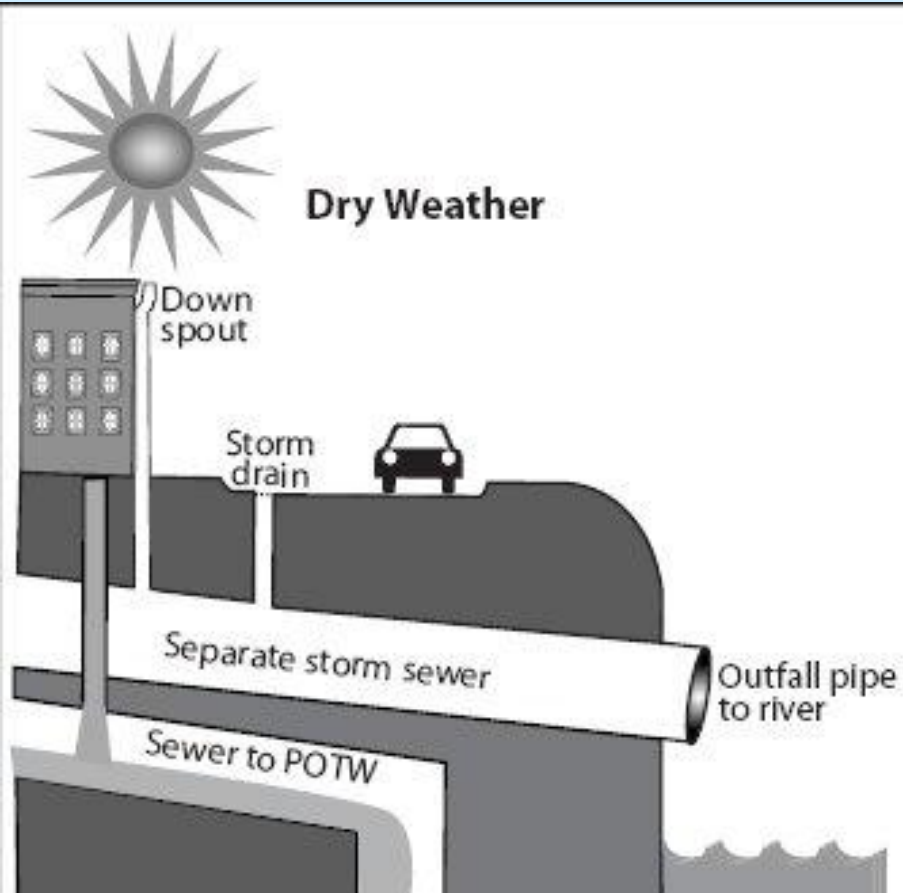
July 12, 2007



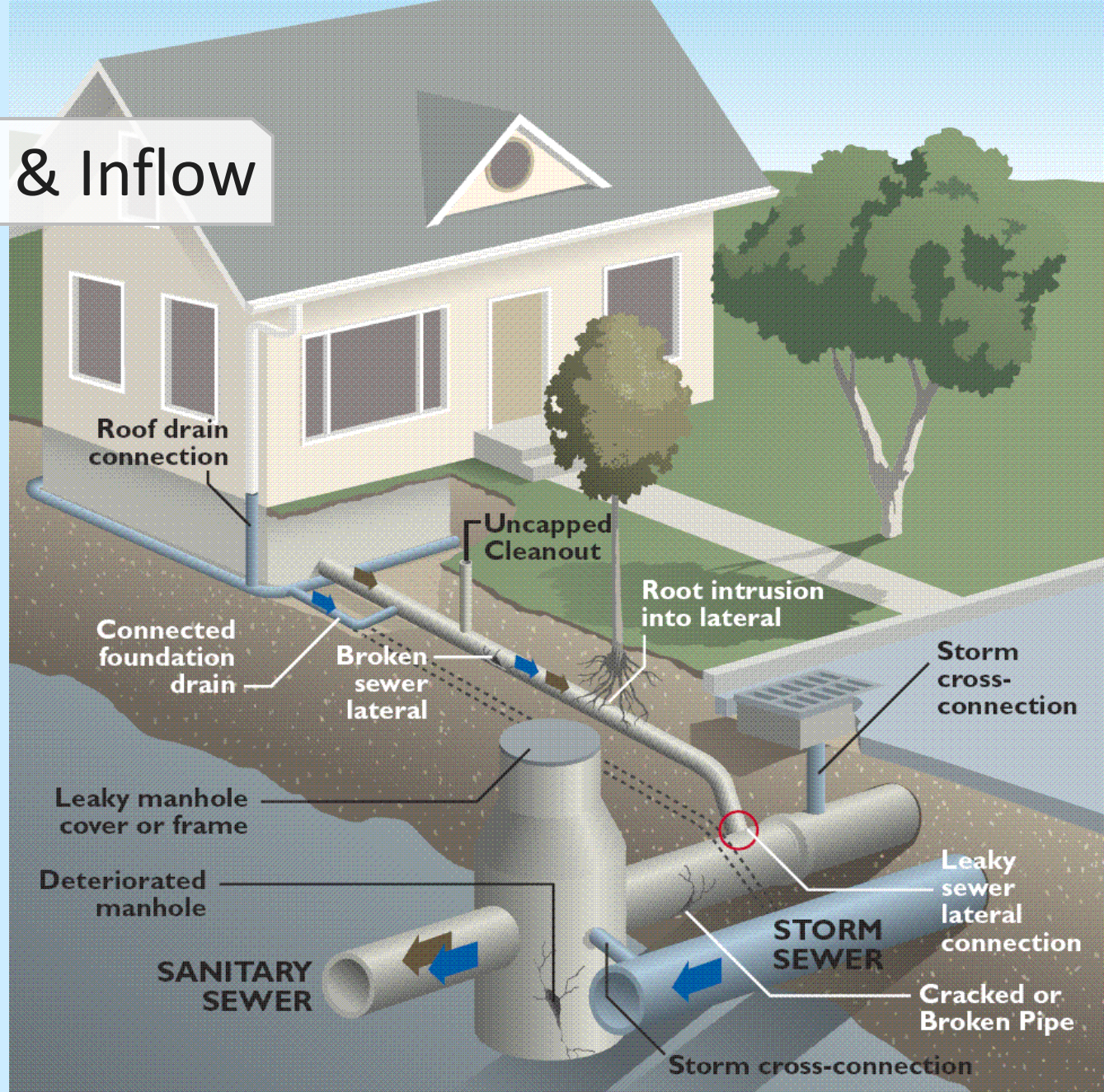
Separate Sewer Systems

Dry Weather: sewage to treatment plant

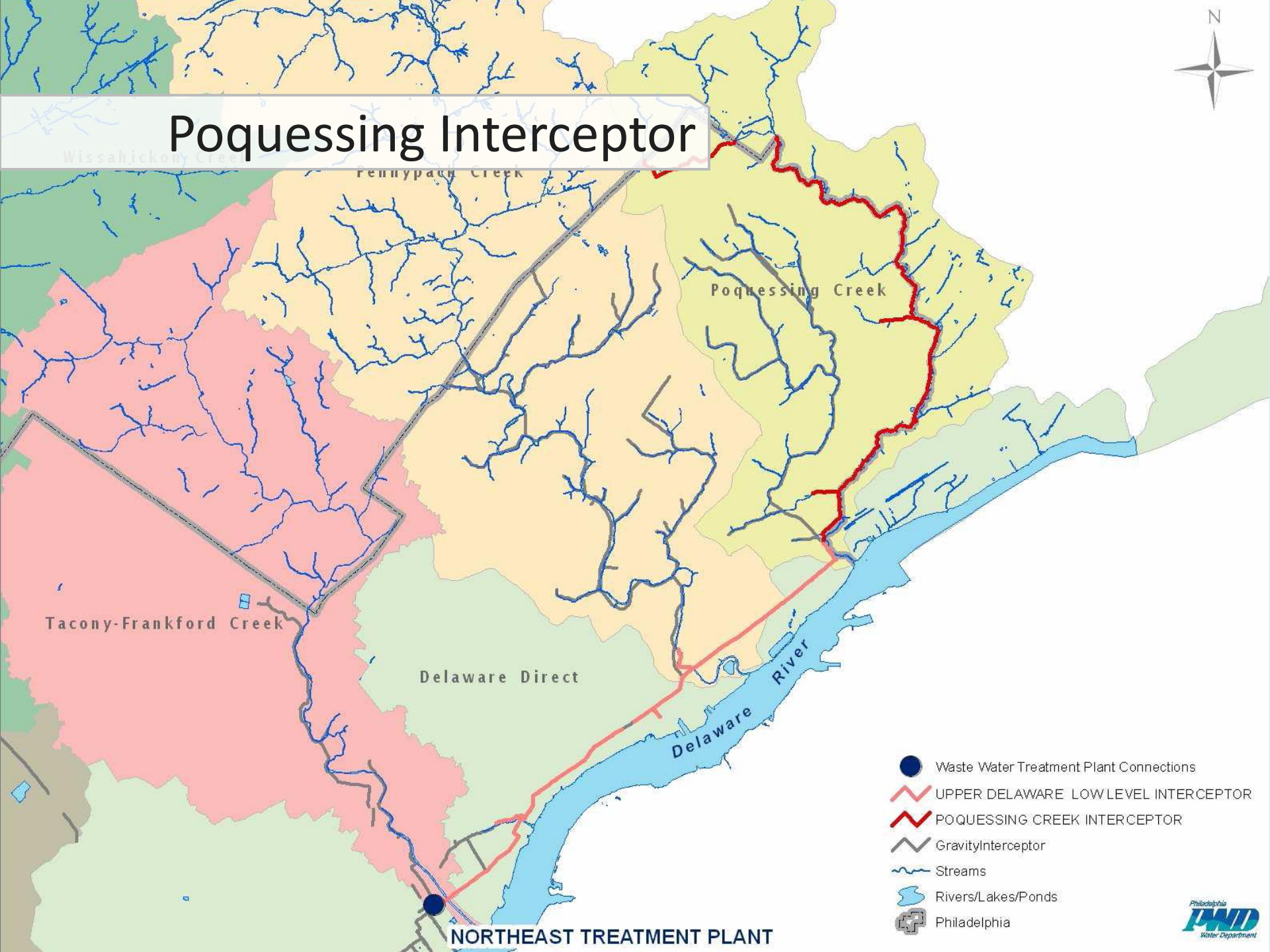
All storms: sewage to treatment plant, all stormwater to streams



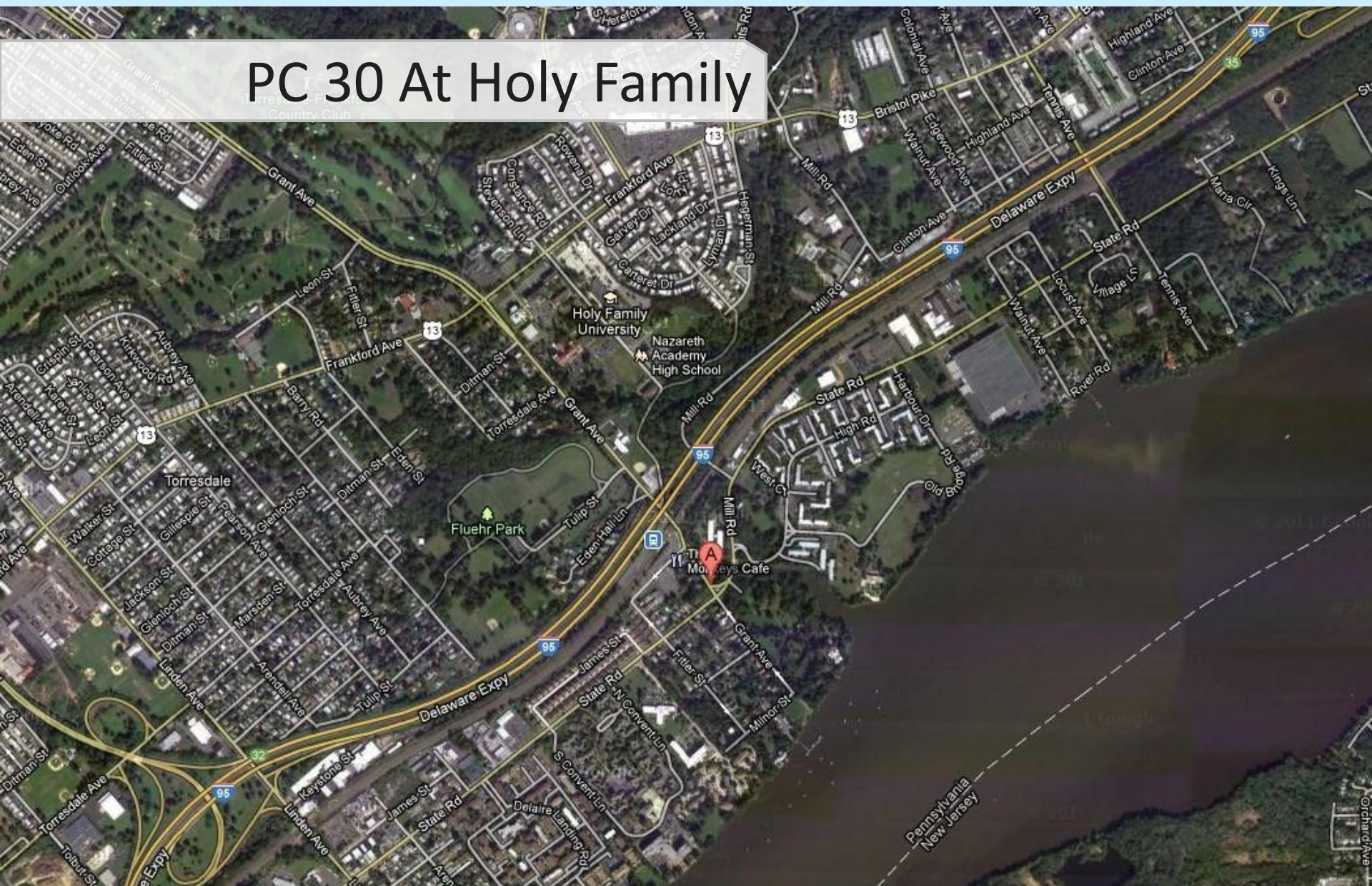
Infiltration & Inflow



Poquessing Interceptor



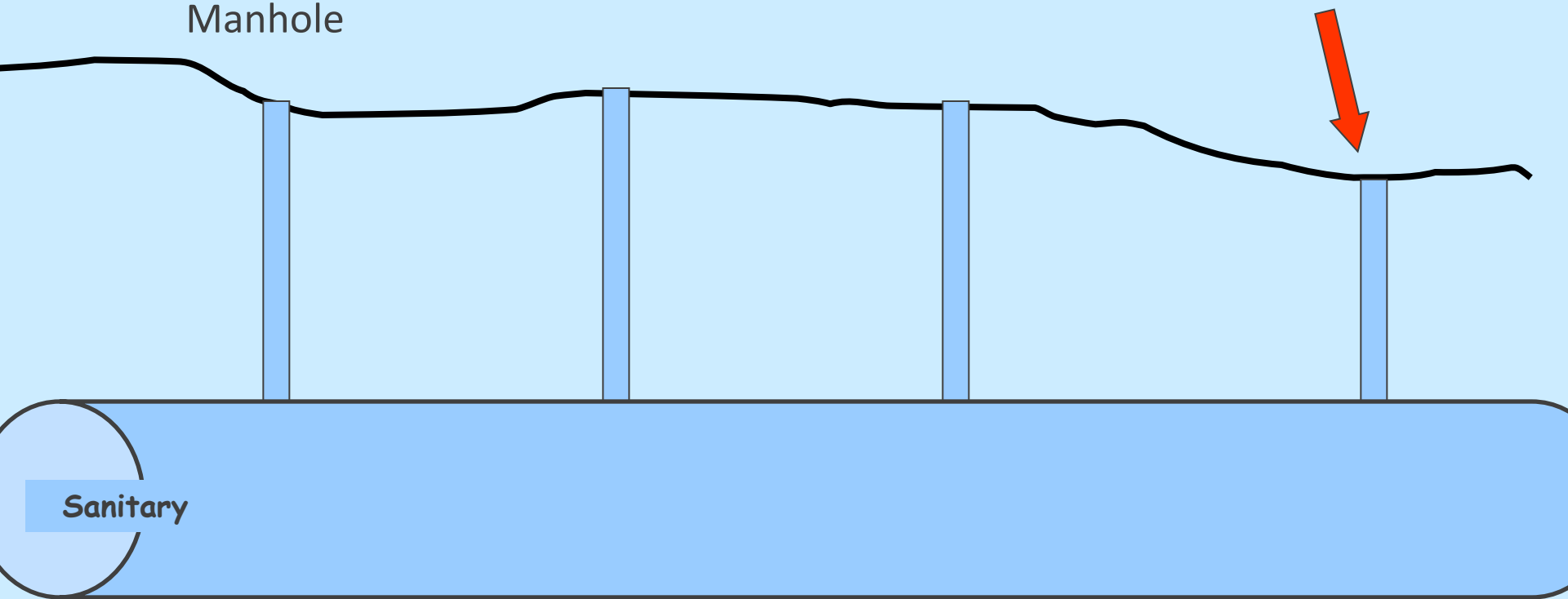
PC 30 At Holy Family



Why Here?

Water level reaches the Surface here first (the site of the lowest manhole)

Manhole



Sanitary

Poquessing Relief Sewer



Construction



Questions?